

uSDC20D Quick Start Guide



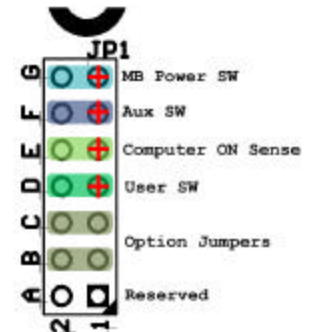
Step 1:

Using yellow 0.25" female automotive connectors, connect heavy gauge wire (~12-gauge) to the VIN, VOUT, and GND of the uSDC. Connect VIN right to the battery. Connect GND to the Chassis of the car or the best ground you can find and connect the ACC line to the ignition of your car or the red wire that your stereo uses for ignition switched power. Connect VOUT to the + or Red wire your inverter or Power Supply. Ground the Black or – side to the same chassis ground of the car.

Step 2:

Connect the computer motherboard to the MB Power SW Jumper of JP1 on the uSDC using a 2-pin jumper wire.

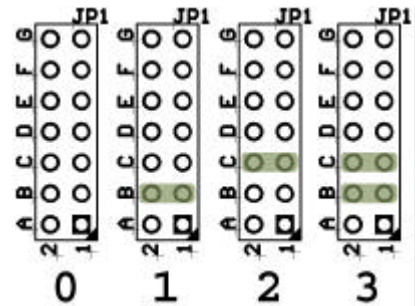
Figure out which pin is "plus" (+) on the motherboard by setting your multimeter to "Ohms" or "Continuity" and measure from a motherboard mounting hole to the Power Switch pins of the motherboard. The one that is low resistance or beeps, is NOT the plus side. The other option is to guess and check, plug it in one way then try the other way. You can't damage the uSDC (Guess and check at your own risk).



Step 3:

Decide if there is an option jumper you want to install. Decide if you want your system to come on when you turn the key (ACC) or when the car starts.

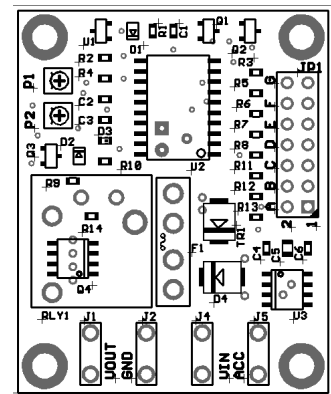
Use **option 0** to turn on with the Key (ACC), or **option 1** to turn on with the key (ACC) as well as engine running.



Step 4:

Set the timer for how long to wait after ACC goes away before the uSDC tells the computer to shutdown. You can have between 0 and 30 minutes by adjusting **P1**. Clockwise for more time, counterclockwise for less time. The unit ships with it set to about 15 minutes.

Set the low voltage threshold at **P2**. It is adjustable between 10 and 12 volts. This is the voltage at which it will try to shut down because the battery is low. It ships with the threshold around 11 volts, turn it clockwise to make it more sensitive (closer to 12 volts), and counter clockwise to make it less sensitive (closer to 10 volts).



Step 5:

Try it out! The uSDC is now ready. When you turn on your ignition, it will apply power to the power supply and then hit the power button. The computer should turn on and you're on your way to hands free shutdown controller power. Refer to the detailed spec sheet for more advanced features. This quick start guide is designed to get you running fast. Good luck!